

CANAL^{by}M
REEM ISLAND

DEVELOPED BY





CANAL ^{by} M
Luxury To Strive For

Welcome to Canal by M, a new residential development offering modern living in the middle of Reem Island, set alongside the seashore, facing the mangrove.

#LuxuryToStriveFor

WELCOME TO REEM ISLAND

A natural island with luxurious living, and best facilities. Home to over 20 world-class institutions.

Green parks, quiet mangroves, sandy beaches, safe family-friendly atmosphere, and sunshine all year long.

ADGM/Reem Island's application of English common law offers unparalleled economic possibilities.





THE ARCHITECTURE

Elegant low-rise residence, designed for homeowners with a refined modern taste.

Luxurious homes offering 2 to 4 bedrooms with exclusive seashore location.

All 31 residences offer unobstructed views of the mangrove and the beach.

The positioning of the apartments has been carefully orientated to best capture the open views.

Elegant fixtures, quality fittings and spacious balconies, homes are designed to enhance every lifestyle.

With floor to ceiling windows and raised 3.1 meter ceilings, the living spaces feel grand and spacious.

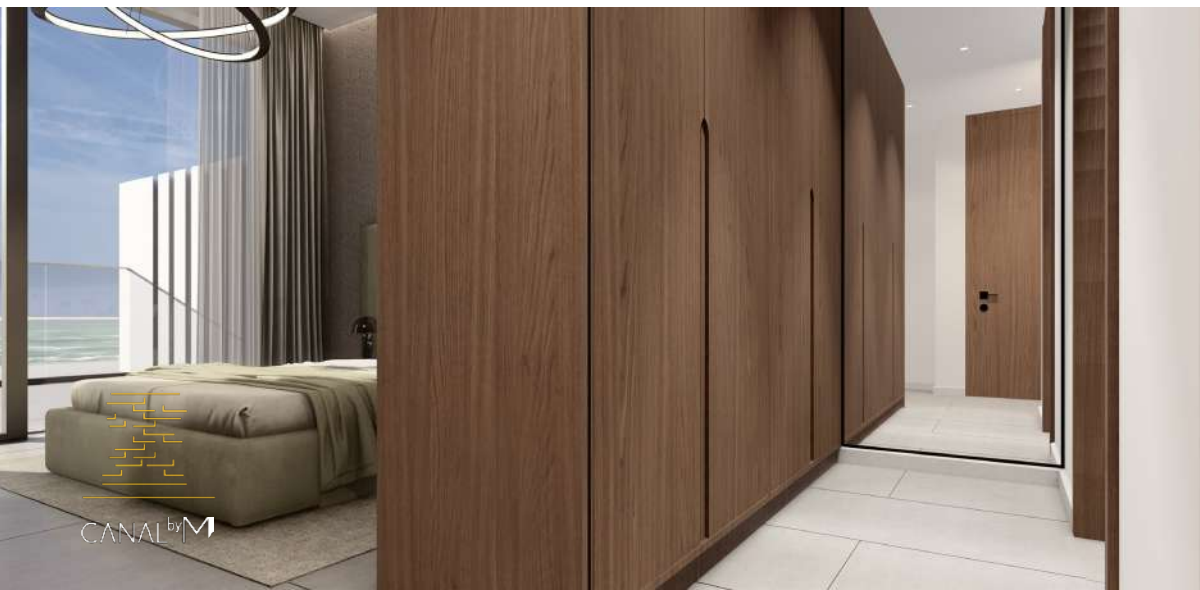
A variety of well-designed townhouses, penthouses, and two- and three-bedroom flats are available for selection.









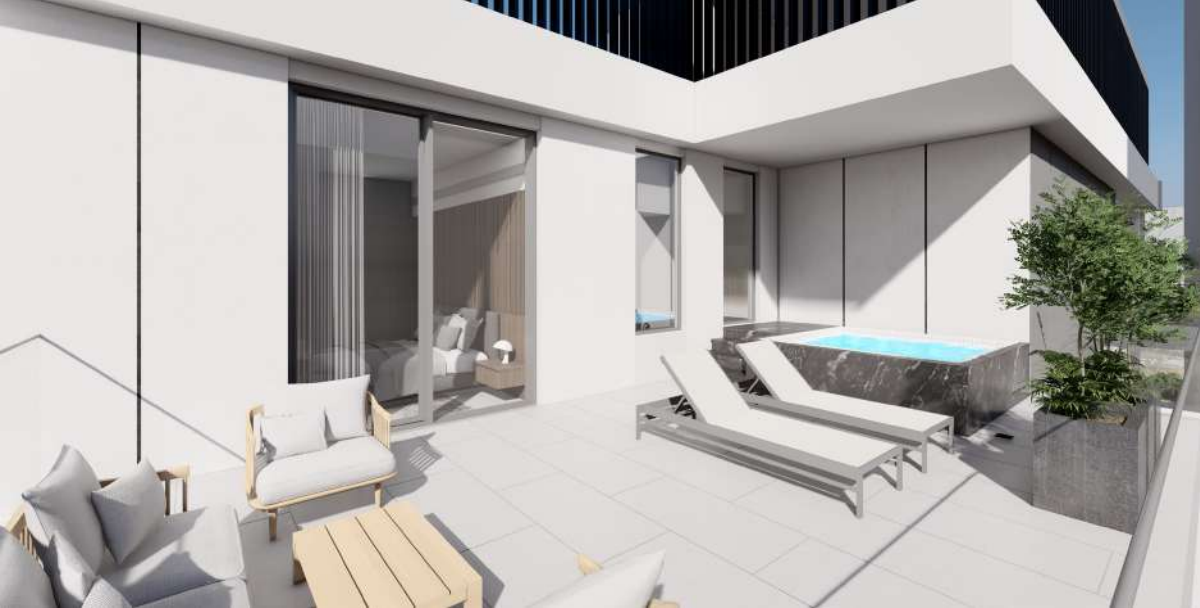














CANAL by M







Connect with Us
for Your Perfect Home!

800 - GEFINOR (4334667)
Contact@gefinorproperties.com
www.gefinorproperties.com